

FrameSmartv6 release is now available for download.

Please read the following instructions and attachments carefully – we suggest you print them out for ready reference.

We are recommending current FrameSmart users to take this opportunity to use the trial/demo version first before conducting the full upgrade from **FrameSmartv5.3** to **FrameSmartv6**.

This will serve a dual purpose:

1. To check whether the graphics card on your Windows-XP system is capable of running the enhanced graphics used by FrameSmartv6.
2. To become familiar with the new product.

We have found that some of the older XP systems out there are not be able to run the more sophisticated graphics of the new v6 software, in which case you will need to postpone your upgrade to FrameSmartv6 until you can migrate your hardware from Windows-XP to Windows-7 (as per current Microsoft support policy).

If you already have Windows7 or Windows8 installed on your system you should not experience this graphics problem.

In addition, your current version of FrameSmart must already be at level **FrameSmartv5.3** before you can upgrade to **FrameSmartv6**.

Trying to upgrade to v6.1 from a release level earlier than v5.3 will not work.

If you are already on **FrameSmartv5.3**, please skip this next step.

Process to upgrade from **FrameSmartv5.2** (or earlier) to **FrameSmartv5.3**:

- A. Make sure you have taken a backup of your current FrameSmart files.
- B. Open **FrameSmart** and go to Menu/Online/Upgrade FrameSmart.
This will present you with the options of QUICK or SLOW upgrade paths.
Click on the QUICK option, then go through the upgrade process provided.

Process to install **FrameSmartv6** and activate the Trial version:

Make sure you have taken a back-up copy of your current **FrameSmartv5.3** files.

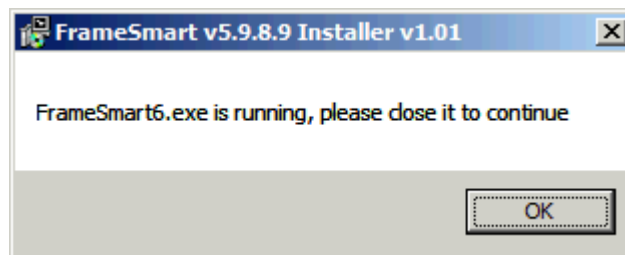
1. Download the “FrameSmartv6 Installer” from our website, via this link:

<http://www.framesmart.co.nz/downloads/public-downloads?download=72%3Aframesmartv6.2-installer>

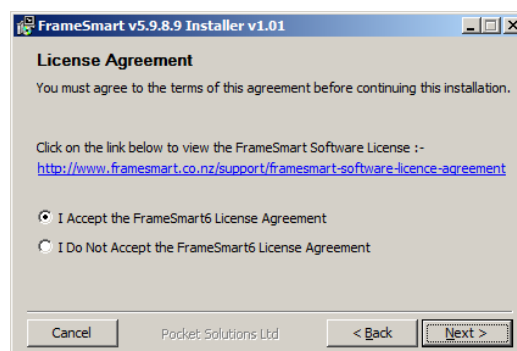
2. The FrameSmartv6 Installer will download a file with a name like “FSInstaller.exe”. This needs to be “Run as Administrator” to ensure all programs and files are installed correctly, i.e. right click on the file in your Downloads area and select ‘Run as Administrator’.
3. The installer start-up screen will display first:



4. Click on **Next >** and the installer checks to see if any of RPV, rpvprint.exe, framesmart6.exe or flo.exe is running. If any are running the program will display a warning similar to that below:

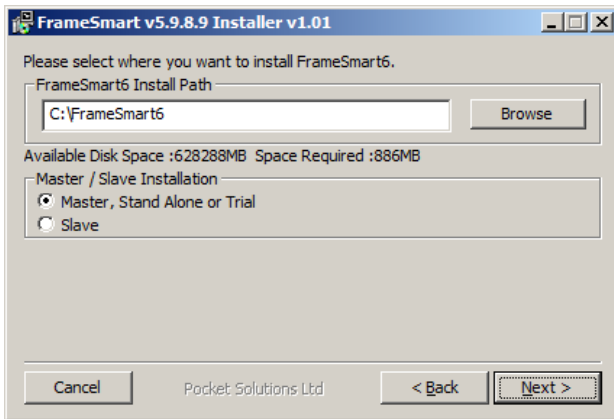


5. The Software Licence Agreement screen is now displayed:
Read and accept the software licence agreement.



6. Click on **Next >** and the installer will check to see if an existing installation of **FrameSmartv6** is present. If one exists it will go to Step 13 - Repair or Re-install FrameSmartv6.

The selection screen will now display for “Master, Standalone or Trial” OR “Slave” system:



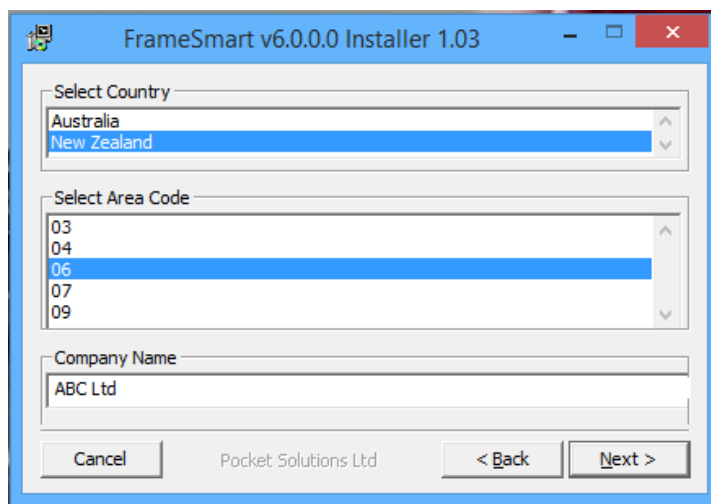
7. Selecting either **Master** or **Slave** options will take you to **Step 8** or **Step 12** respectively.

8. Master system installation

8.1 If **Master / Standalone** option is selected (i.e. a **Master** copy on a network server, or on a standalone PC or laptop), then the software asks for confirmation of your location and **Company/Registered business name**:

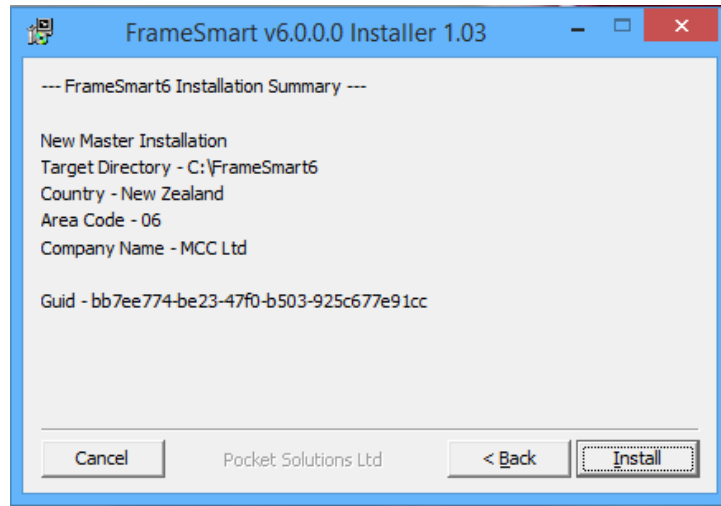
New Zealand installations need to select their telephone area code and company name.

Australian installations need to select their State and Company name.



Click **Next >** to go to **Step 8.2**.

8.2 - Installation Summary Screen:



This is your last chance to back out of the installation, by clicking **Cancel**.

Clicking **Install** begins the installation of the software and database components, in a process involving several steps:

8.3 - Firebird SQL database Setup Wizard

Follow the Firebird installation screens by clicking on the **Next >** button on each screen, leaving all the default settings unchanged, then click **Install** on the last screen to complete this step.

When the Firebird installation and setup is completed, on the last screen uncheck the “After Installation – What next?”, then click on **Finish**.



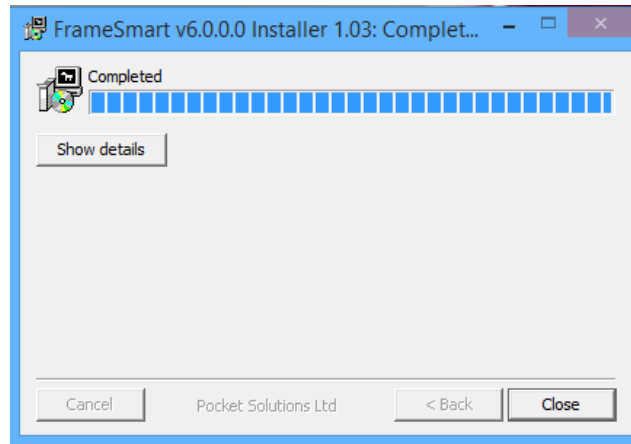
8.4 - RPV Reports Setup Wizard

Follow the RPV installation screens by clicking on the **Next >** button on each screen, leaving all the default settings unchanged, then click **Install** on the last screen to complete this step.

When the RPV installation and setup is completed, on the last screen select the option “No, I will restart the computer later”, then click on **Finish**.

8.5 - Installation completed

The final screen is now displayed.



Click on **Close** to finish the process.

Now restart your computer.

Go to **Step 9 - Configure and Set-up FrameSmartv6** to get started with the new software.

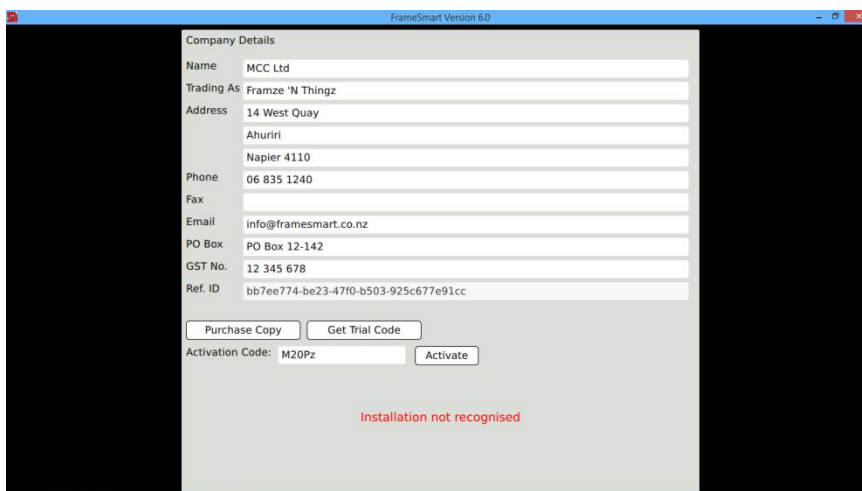
9. Configure and Set-up **FrameSmartv6**

When the installation is complete, **FrameSmartv6** may be started by double clicking on the new

Desktop icon: 

9.1 FrameSmartv6 start-up

The first screen presented to the user in FrameSmartv6 requires the company details to be entered (where not already discovered) and provides two Options: “**Purchase Copy**” or “**Get Trial Code**”.



Company Details	
Name	MCC Ltd
Trading As	Framze 'N Thingz
Address	14 West Quay Ahuriri Napier 4110
Phone	06 835 1240
Fax	
Email	info@framesmart.co.nz
PO Box	PO Box 12-142
GST No.	12 345 678
Ref. ID	bb7ee774-be23-47f0-b503-925c677e91cc

Activation Code: M20Pz

Installation not recognised

To activate a **Trial/Demo** copy, complete the entry of any missing company details on the screen, and click on the **Get Trial Code** button.

An email will be sent to you automatically, containing the Activation code for the Trial copy.

Enter this code in the Activation Code field, and click **Activate**.

The **Trial/Demo** option initiates a demonstration version of the software for a 30 day trial, with a set of dummy customers and a template pricing model. This version is fully functional but is limited to a set of Test Supplier mats and mouldings etc. instead of all suppliers' products in FLO.

The Trail version can be converted to a Full version at any time within the trial period by clicking on the **Activate** button in the top left corner of the pricing screen.

The “**Purchase Copy**” option allows for a full user licence to be enabled, and is activated by a security/activation code supplied by Pocket Solutions Software Ltd on payment of a monthly or annual subscription.

Current users with paid up support (as at 1st June 2014) upgrading from **FrameSmartv5.3 receive their upgrade FREE of charge. When you click on the ‘Purchase Copy’ button to request the Activation code, you may be contacted directly by the Help Desk and/or a security key/activation code will be sent to you by email.**

Current users who have let their support lapse – please contact the Help Desk to discuss upgrade options and costs:

0800 622 583 in NZ - Pocket Solutions Software Ltd or

07 5313 3072 in Australia - Salessoft Pty Ltd.

9.2 Full FrameSmartv5.3 upgrade to FrameSmartv6 process:

When the “Purchase Copy” option is selected, and a copy of FrameSmartv5.3 system is detected on the PC, then the upgrade process is initiated:

Company Details

Name	MCC Ltd
Trading As	Framze 'N Thingz
Address	14 West Quay Ahuriri Napier 4110
Phone	06 835 1240
Fax	
Email	info@framesmart.co.nz
PO Box	PO Box 12-142
GST No.	12 345 678
Ref. ID	bb7ee774-be23-47f0-b503-925c677e91cc

Activation Code:

Installation not recognised

You may be contacted directly or an email will be sent to you as a current paid-up user, containing the Activation code for the full upgrade copy.

Enter this code in the Activation Code field, and click **Activate**.

The **FrameSmartv6** full version will be installed, and the next screen displayed:

FrameSmart Version 6.0

Do you wish to import data from an older installation of FrameSmart?

Selecting “Yes” takes you to **Step 10**.

Selecting “No” takes you to **Step 11**.

10. Importing FrameSmartv5.3 system & data

If you selected “Yes” in Step 9, the current **FrameSmartv5.3** data will be imported into **FrameSmartv6**, including all customer records, invoice line items and payments, and the complete debtor system will be set up in the new system.

FrameSmart Version 6.0

Company Details

Name: MCC Ltd

Trading As: Framze 'N Thingz

Address: 14 West Quay
Ahuriri
Napier 4110

Phone: 06 835 1240

Fax:

Email: info@framesmart.co.nz

PO Box: PO Box 12-142

GST No.: 12 345 678

Ref. ID: bb7ee774-be23-47f0-b503-925c677e91cc

Purchase Copy Get Trial Code

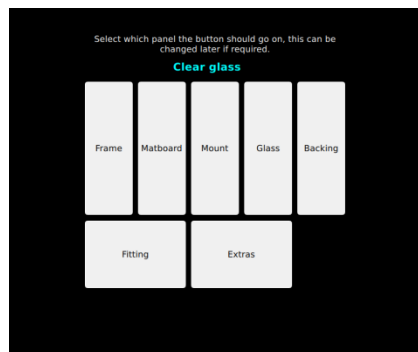
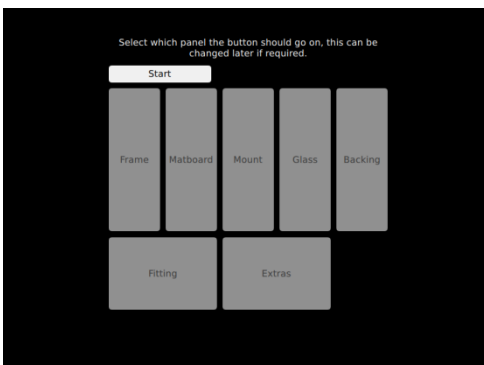
Activation Code: M20Pz Activate

Installation not recognised

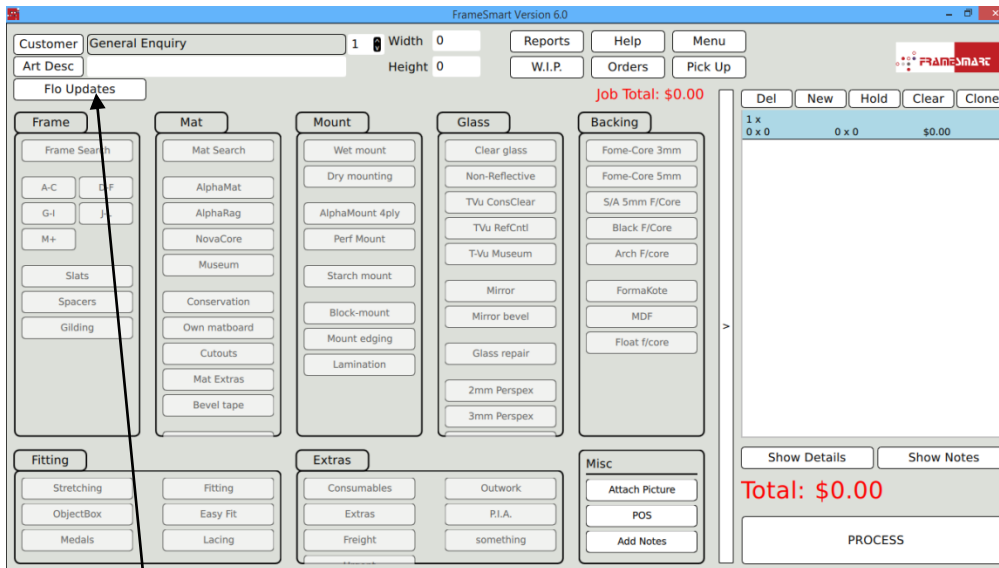
The current pricing model (buttons and settings) will be imported, along with all pre-set items in the old system, plus logos and ‘own’ moulding and matboard lists.

You will be asked to allocate each pricing button to set areas on the screen, and these can also be moved around or edited by the user after the import is completed.

Click **Start** on the first screen to start the process. When each button is named, click on the area on the screen where you want it to ‘live’.



When the button allocation has been completed, the new pricing screen will be presented to you, and **FrameSmartv6** is ready to go !



You may need to close this screen and restart **FrameSmartv6** to see all the customer and accounts data imported from **FrameSmartv5.3**.

In addition you will need to import the latest FLO data into **FrameSmartv6** by clicking on the **FLO Updates** button on the front screen.

You are now ready to go with the new **FrameSmartv6** software.

To get you started, refer to the “How it Works” document attached to these notes, or download the same document from our website for basic user instructions on **FrameSmartv6**:

<http://www.framesmart.co.nz/downloads/support-documents/category/5-framesmart?download=32%3Aframesmartv6-how-it-works>

Notes on managing the transition between the old and new systems.

FrameSmartv5.3 will remain intact on your system after the upgrade, so you can refer back to old work detail which does NOT get imported into **FrameSmartv6**.

- We recommend you print your job schedule and pick-ups lists from the old **FrameSmartv5.3**, and work from these to complete the old jobs.
 - Work on the **FrameSmartv5.3** Job Schedule which is completed after the change-over date should be marked as 'completed' in **FrameSmartv5.3**, but any payments taken in for that completed work after this date should be applied in **FrameSmartv6** to keep the debtors balances up to date.
 - All new work, of course, should be entered into the new system, including any deposits taken.
 - We recommend you print the Aged Debtors report and Financial Report in the new **FrameSmartv6** before you enter new work. These should match your outstanding invoices in the old system, and give you the status of your Debtors at cut-over date.
-

11. Installing a new **FrameSmartv6** system

If “**No**” was selected on the screen in Step 9, it will prompt the installer to create an initialised database for a new installation and new business user.

This will contain a template pricing model to get the new user started, with buttons in place on the pricing screen, and sample pre-set items in place, such as Art Descriptions, payment types, matboard borders, POS items, etc. These may be modified at any time to suit the user.

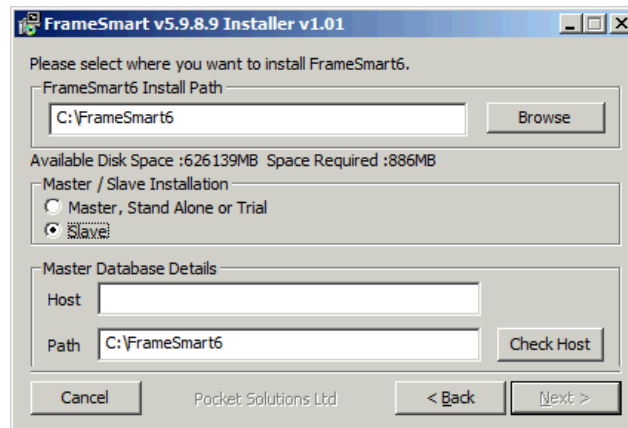
A new installation requires an Activation Code to be issued by Pocket Solutions Software Ltd, and entered into the screen in **Step 9.2** for the installation process to continue from that point.

A bare bones copy of FLO (Test supplier data only) will be installed on the Master PC as part of a new installation. Once the installation is completed FLO will need to be set up with the user’s supplier account codes and updated to bring down the latest products from all suppliers – refer to the separate FLO operating instructions on how to achieve this.

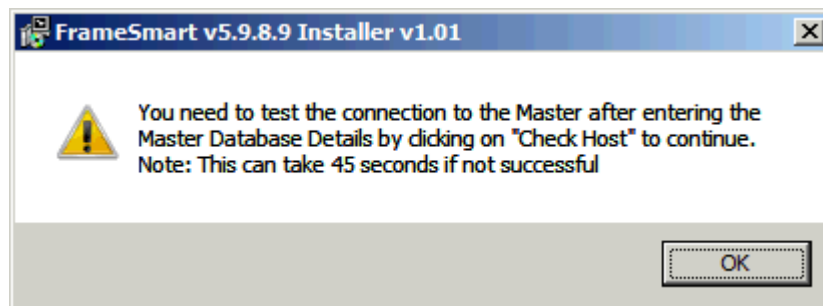
Once FLO is updated, **FrameSmartv6** will need to import these latest entries by using the FLO updates button on the pricing screen (top left corner).

12. Slave system installation

If the Slave option is chosen in Step7, the software installs a slave copy of the system requirements on the Slave workstation, and asks where the Master resides:



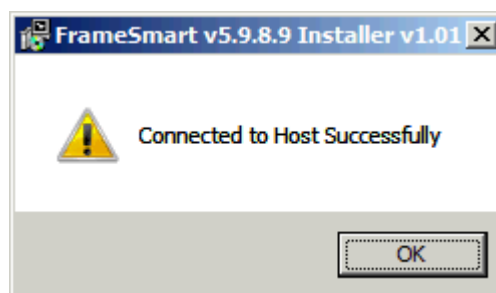
When you click on Slave this window is displayed:

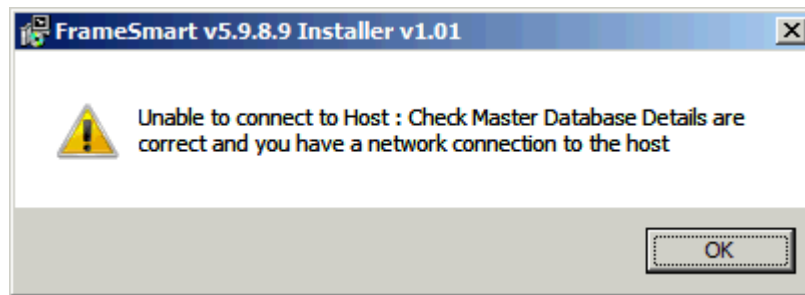


The user then has to enter the IP address or path on the Master PC/server where the host database resides.

Click on Check Host button to verify the connection exists to the host database/system.

When you click on the Check Host button you either get...

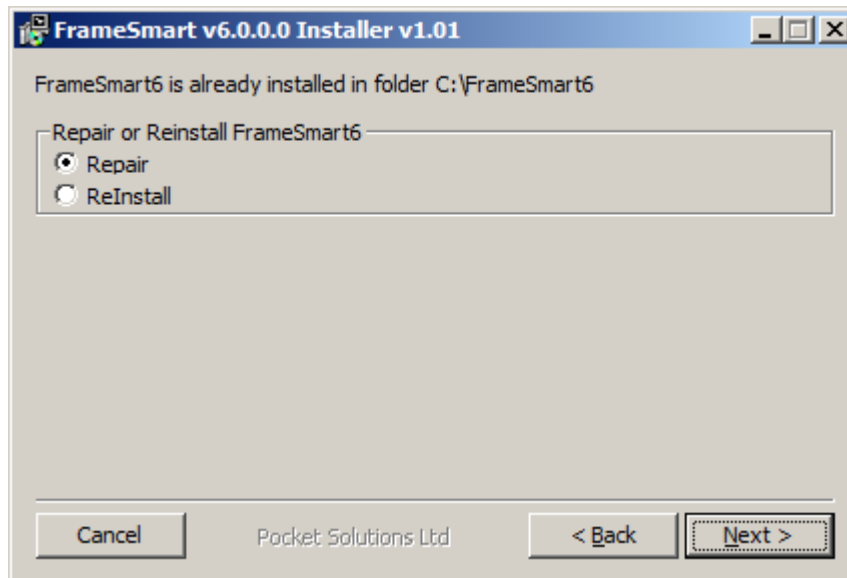


or

Go to Step 9 once these prompts have been satisfied.

13 - Repair or Re-install FrameSmartv6

If an existing installation of Framesmart6 is found, the screen below will be displayed next:



Repair FrameSmartv6 installation

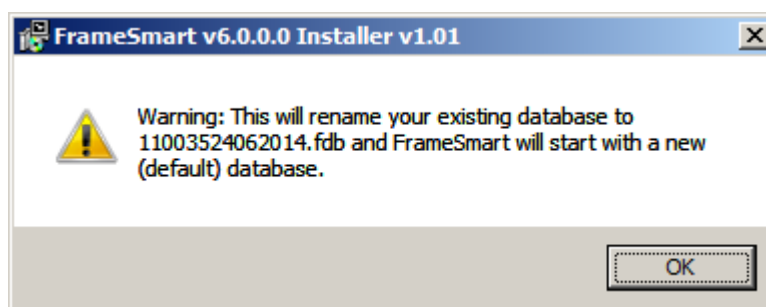
If you select **Repair** then clicking **Next >** will take you to the Installation Summary screen at Step 8.2 in this document.

The **Repair** option will simply reinstall all FrameSmart programs and keep the database intact as well as any licencing files. This will not reinstall the FLO program or database.

Re-Install FrameSmartv6 installation

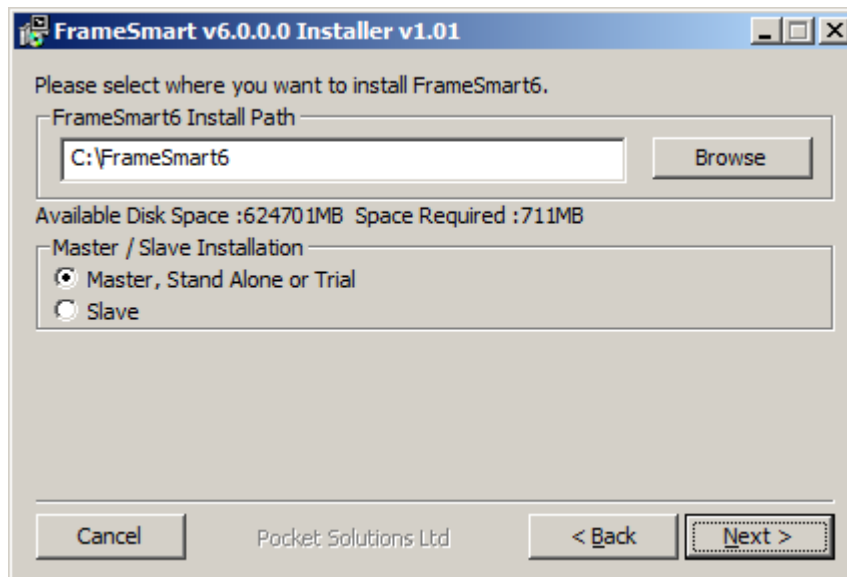
The **Re-Install** option will re-install all programs and replace the FrameSmart database with a new "vanilla" database with no client data in it. This will not re-install the FLO program if a FLO installation already exists.

If you select **Re-Install** then the program will rename the existing database to preserve it , as per the dialogue below, then install a new 'vanilla' database:



The nname is based on the Date/Time in format hhmmssddmmyyyy.
In the example above the date/time is 11:00:35am on 24 June 2014.

Clicking on OK, then **Next >** will take you to the screen below, at Step 7 in this document:



Return to Step 7 now.

FrameSmart®, **FLO®**, and **VisualiseIt®** are trademarks of Pocket Solutions Software Pty Ltd

All contents Copyright© Pocket Solutions Software Pty Ltd, 2002-2015. All rights reserved.